

Pay-on-Foot Station Credit Card

OVERVIEW

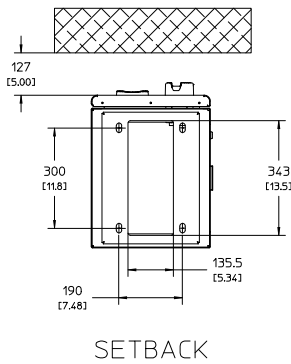
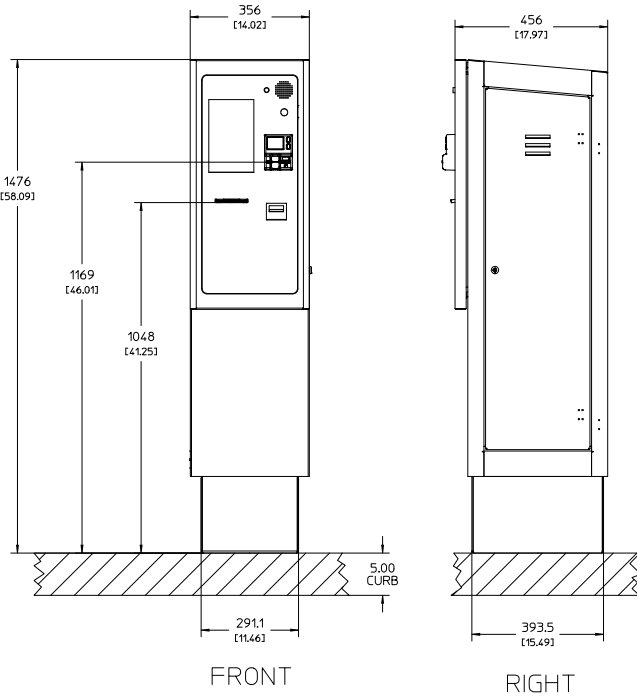
The Amano ONE Credit Card Pay-on-Foot Station delivers credit card acceptance in strategic locations of your facility for an expedited exit process. The device processes 2D barcode tickets from Amano ONE Entry Stations and manages payments via credit card and validation options.

The Pay-on-Foot Station offers enhanced customer convenience through intuitive user guidance, a large touchscreen display, and a built-in call center. The device communicates with the Amano ONE cloud platform for simplified deployment and seamless updates, accelerated transactions, and reliable performance.

FEATURES

- Magstripe and P2PE EMV-ready MSR/Chip terminals
- Contactless credit card options for NFC, Apple Pay, and Google Pay
- Intelligent QR barcode with mobile pay option
- TCP/IP network connectivity
- Intercom and camera for built-in call center
- Modular USB components for simplified service
- Accelerated processing and transaction speeds
- Automatic deployment of updates through the cloud
- Communicates with Amano ONE cloud-based software





Recommendation only.
Installation requirements may vary.

Specifications

COMPLIANCE

RoHS Compliant

Amano ONE Pay-on-Foot Stations do not store credit card data
Meets ADA (Americans with Disabilities Act) requirements

ELECTRICAL

Operational: 1.5A @120V full load, when heater is not running
8.2A when heater is running

Power Source: 120 VAC, 60 Hz, 15A circuit protection

TIME CONTROL

Real-time clock synchronization with host computer

ENVIRONMENT

Temperature: -40°C ~ 55°C Ambient

Humidity: 10% ~ 95% (non-condensing)

HOUSING

Heavy-duty, 14-gauge steel construction, weather gasketing, lockable door

Height: 51.6" (131.1 cm)

Width: 14.0" (35.6 cm)

Depth: 19.18" (48.7 cm)

Weight: 140 lbs. (63.5 kg)

Finish (Standard): Textured powder coat finish Amano EN75 Light Gray (RAL#7047)
Custom color available upon manufacturer approval

DISPLAY

Graphic color 10" LCD with backlight

Height: 8.5" (21.59 cm)

Width: 5.3" (13.46 cm)

Display Buttons Lost Ticket, Receipt, Help

BARCODE SCANNER

Opening: 60mm x 50mm

Barcode Types: 1D (Linear) and 2D (QR)

Ambient Light: Total darkness to 9,000 ft.-candles (96,900 LUX)

TICKET READER/ENCODING MECHANISM

Thermal printer with 1550' paper roll

Encodes 2D data matrix barcode data

Reads all accepted 1D and 2D data matrix barcode tickets, validation coupons, and passes

INTERCOM/CAMERA

Integrated IP intercom and camera

Compatible with many other third-party intercom devices

Specifications are approximate and are subject to change without notice.

